

20. *Chacone de Phaeton* *Chacone*

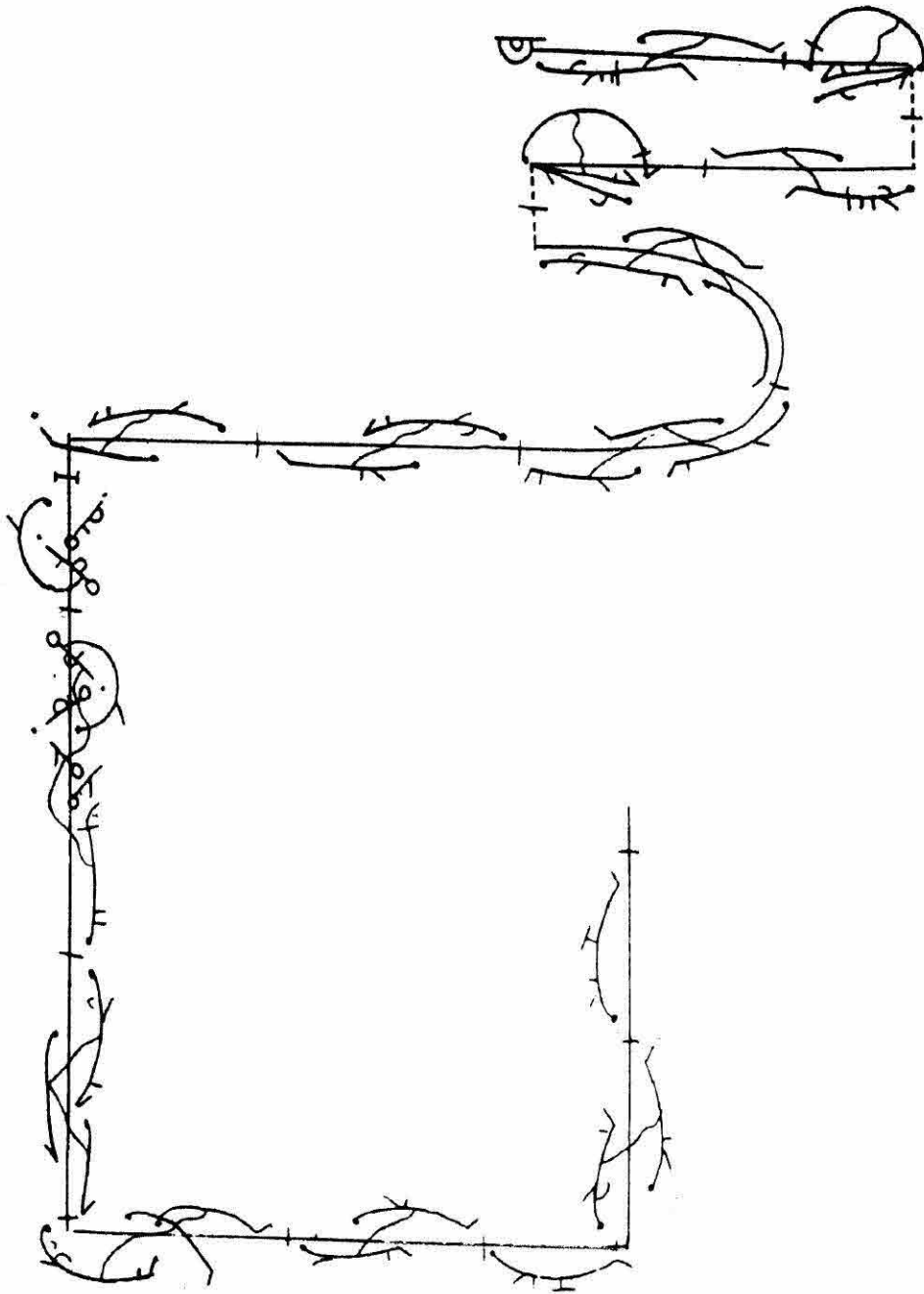
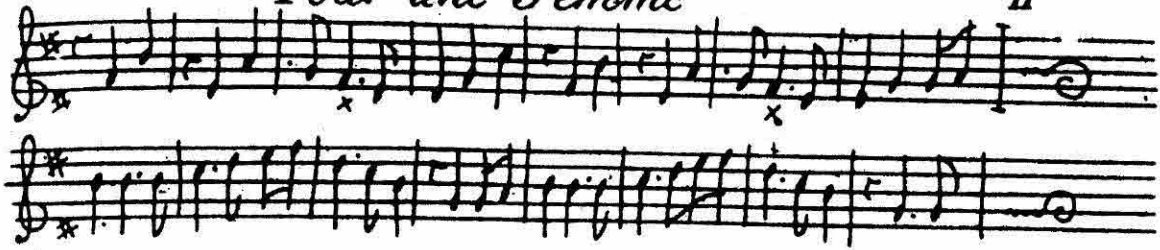
Handwritten musical notation on two staves. The top staff is in treble clef with a key signature of one sharp (F#) and a 3/4 time signature. It contains a melodic line with many sixteenth notes and rests. The bottom staff is in bass clef with the same key signature and time signature, containing a bass line with many sixteenth notes and rests. There are some 'x' marks under certain notes in both staves.

Chacone pour une femme

Handwritten musical notation for 'Chacone pour une femme'. It begins with a rectangular box containing some scribbled-out notes. Below this is a long, vertical staff of music. The notation is very dense and appears to be a single melodic line written vertically. At the bottom of the page, there are four horizontal staves, each containing a few notes and rests, possibly representing a different part of the piece or a variation.

Pour une femme

11



12.

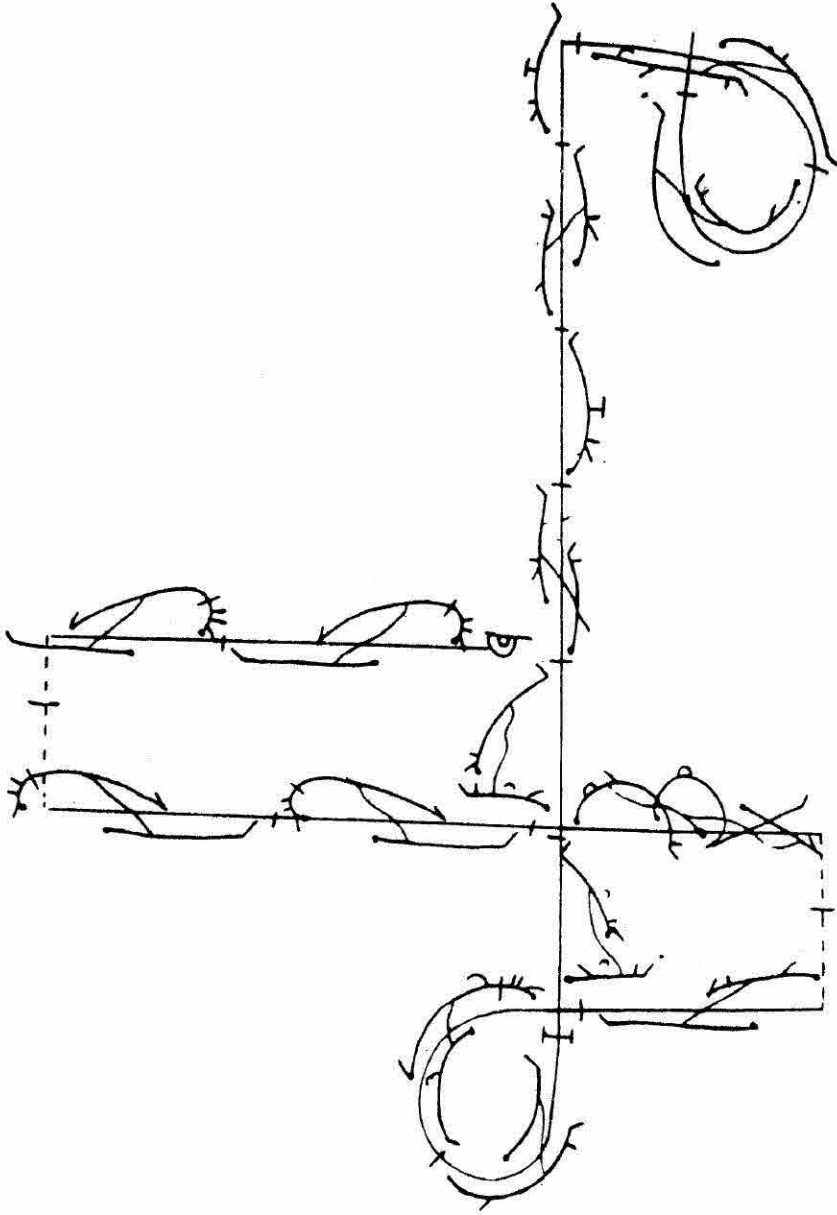
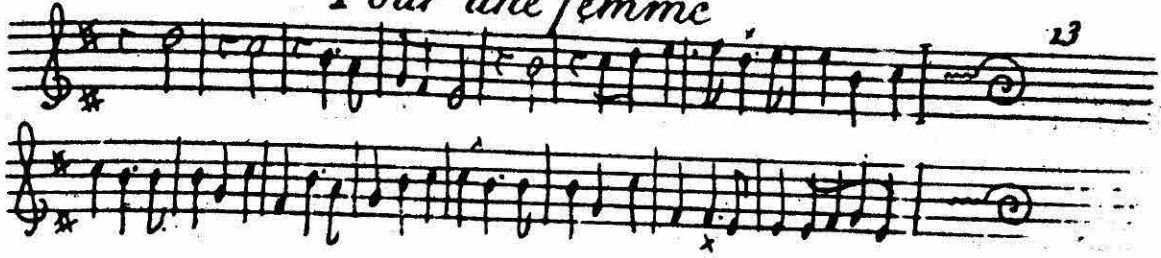
Chaconne

Handwritten musical notation for a Chaconne, consisting of two staves. The notation includes notes, rests, and dynamic markings such as 'x' and 'f'. The piece concludes with a double bar line and a fermata on the top staff.

A large, abstract, hand-drawn scribble that resembles a musical staff with notes and rests. The drawing is highly stylized and appears to be a doodle or a stylized representation of the music above.

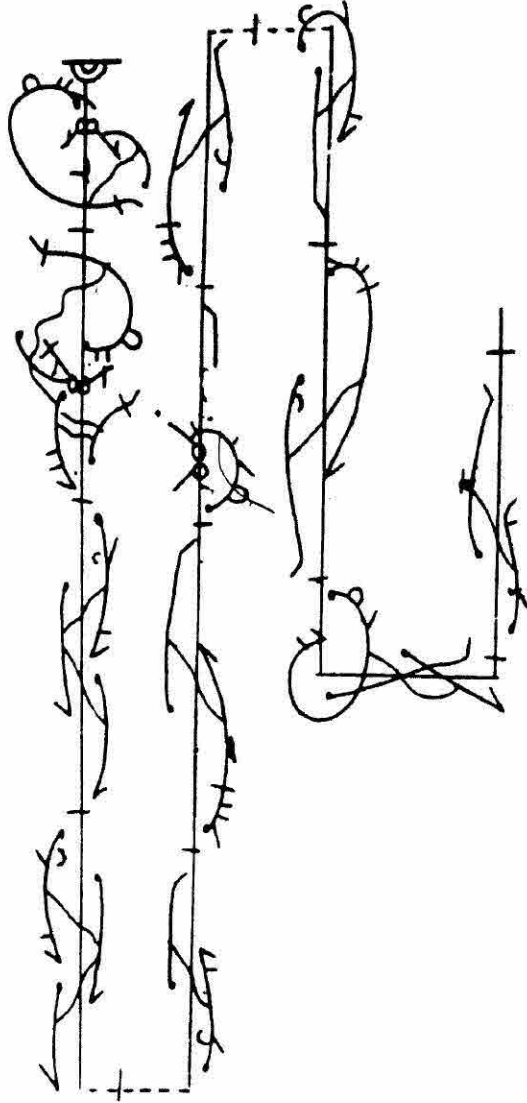
Pour une femme

13



14

Chacone



Pour une femme

Two staves of musical notation. The top staff is in treble clef with a key signature of one sharp (F#) and a common time signature (C). The bottom staff is in bass clef with a key signature of one sharp (F#) and a common time signature (C). The music consists of a series of eighth and sixteenth notes, ending with a double bar line and a repeat sign.

A large, stylized calligraphic letter 'S' that serves as a musical staff. The letter is filled with intricate, overlapping lines and contains musical notation, including notes, stems, and beams. To the right of the 'S', there are three vertical staves of musical notation, each containing a series of notes and stems. Dashed lines connect the bottom of the 'S' to the top of the first vertical staff, and the top of the 'S' to the bottom of the second vertical staff.

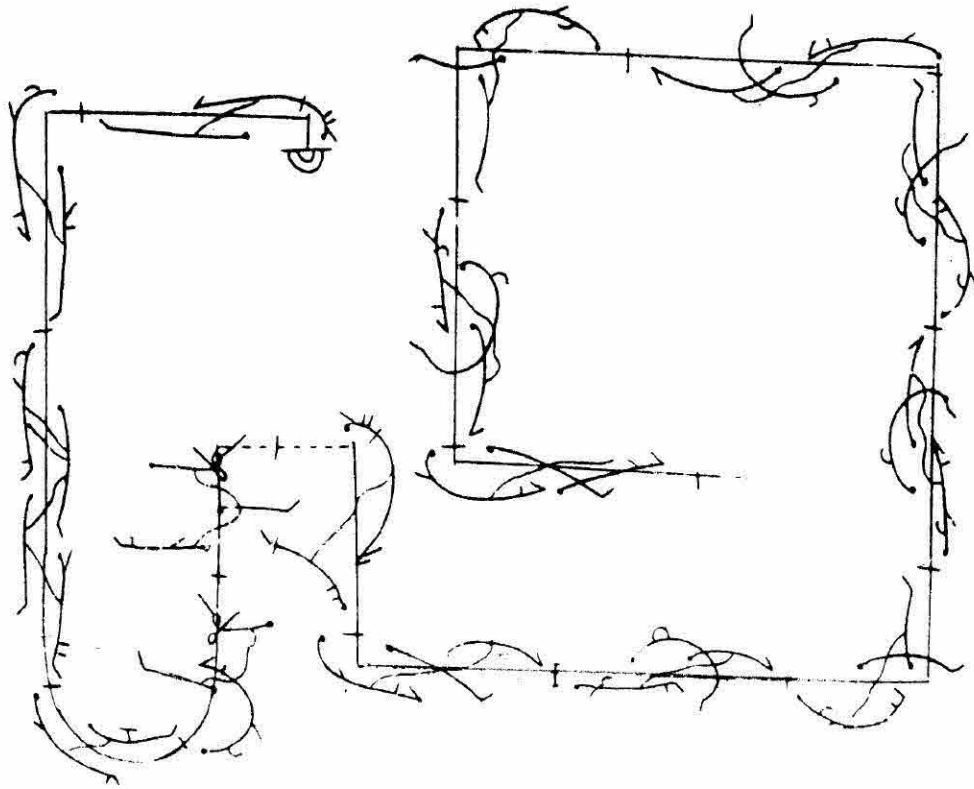
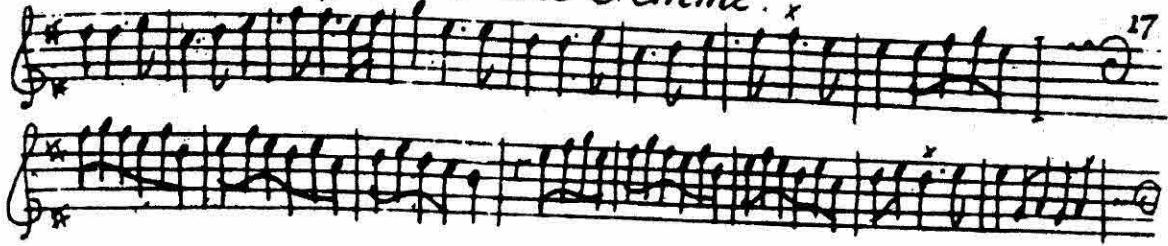
16

Chaconne

Two staves of musical notation, likely for guitar, showing a sequence of notes and rests. The notation is in a treble clef with a key signature of one sharp (F#). The first staff begins with a treble clef and a sharp sign, followed by a series of eighth and sixteenth notes. The second staff continues the sequence, ending with a double bar line and a fermata.

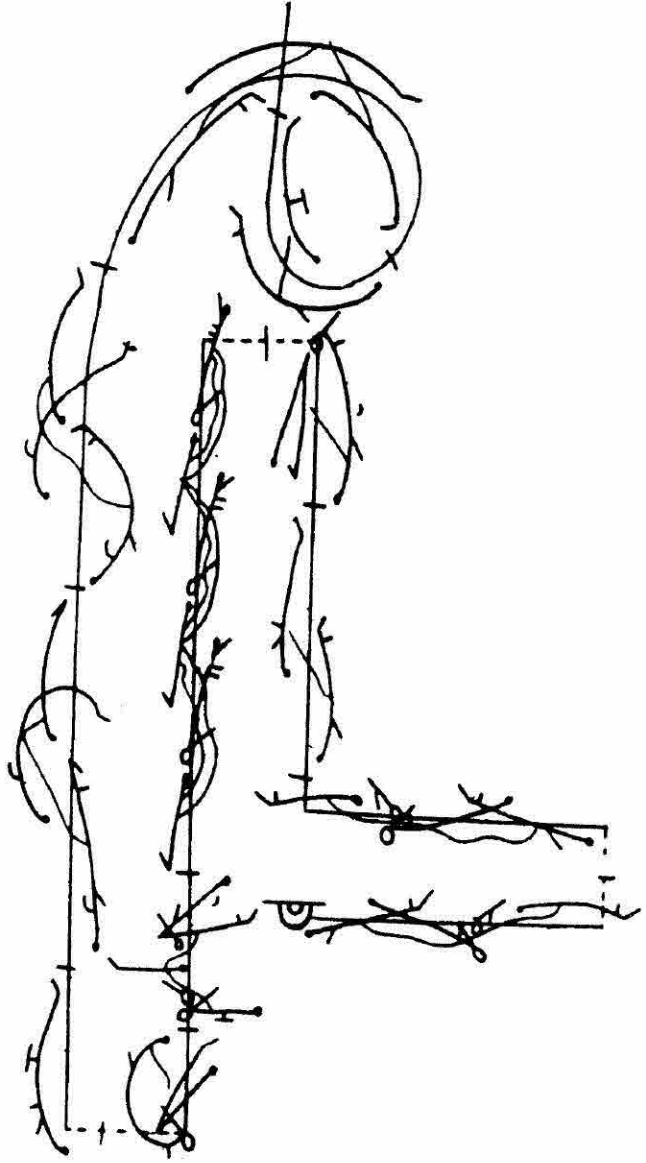
A collection of handwritten musical sketches and diagrams. It includes several vertical lines with notes and rests, some with arrows indicating movement. There are also larger, more complex sketches that appear to be diagrams or flowcharts, possibly related to the musical structure or performance technique. The sketches are drawn in black ink on a white background.

Pour une femme.



Chaconne.

18



Pour une femme

